

**FOSHAN SHINING LIGHTING TECHNOLOGY CO., LTD**

ADD: D factory, #10, Baihe Road, Nanhai Danzao Eco-Industrial Park Zip: 528216 W: <http://www.gledse.com/>  
T: 86-757-86780855 F: 86-757-86765036 M: 86-18927767560 Email: [sales@gledse.com](mailto:sales@gledse.com)

---

# PRODUCT SPECIFICATION



## LED ROUND SLIM PANEL LIGHT

Model No: SL-PLSRR30-20W

Model No: SL-PLSRR40-36W

Model No: SL-PLSRR60-40W

Model No: SL-PLSRR80-72W

Model No: SL-PLSRR90-80W

Model No: SL-PLSRR100-100W

Model No: SL-PLSRR120-120W

### Customer Approval

Tested by	Checked by	Approved by

### SHINING Approval

Tested by	Checked by	Approved by

# FOSHAN SHINING LIGHTING TECHNOLOGY CO., LTD

ADD: D factory, #10, Baihe Road, Nanhai Danzao Eco-Industrial Park Zip: 528216 W: <http://www.gledse.com/>  
T: 86-757-86780855 F: 86-757-86765036 M: 86-18927767560 Email: [sales@gledse.com](mailto:sales@gledse.com)

## FACTORY PROFILE



## FOSHAN SHINING LIGHTING TECHNOLOGY CO., LTD

Our factory locates in Foshan NANHAI DANZAO Eco-Industrial Park, which covered an area of 5000 square kilometers. Our factory specialized in LED office lighting for more than 10 years of experience. We have two registered trademarks. One is **Gledse** for overseas market and other is  for domestic market.

The advanced production equipment, experienced technical personnel and the perfect quality management system bring us to dedicate to developing and producing the products to our customers. We have R&D team working on electric and appearance design. We also have our own metal workshop to deal with the OEM and ODM cooperation. We also accept the customized orders for different projects.

**Main products:** LED Ultra-thin panel light, LED back lit panel, LED smart panel light, LED linear light, LED tube, LED downlight, LED tracking light and LED light fittings.

The full ranges of our light fixtures are manufactured to our high specification with CCC, CE and RoHS compliant certification. Our products are exported to different countries and districts, such as Europe, US, Australia, Russia, Middle East etc.

Our intimate sales and after-sales team are always at your service and will take good care of our valued customers.

Our factory is near to Guangzhou area. It only takes about 1hr to our factory. Welcome to visit our factory at any time.

# FOSHAN SHINING LIGHTING TECHNOLOGY CO., LTD

ADD: D factory, #10, Baihe Road, Nanhai Danzao Eco-Industrial Park Zip: 528216 W: <http://www.gledse.com/>  
T: 86-757-86780855 F: 86-757-86765036 M: 86-18927767560 Email: [sales@gledse.com](mailto:sales@gledse.com)

---

## PRODUCT PICTURES



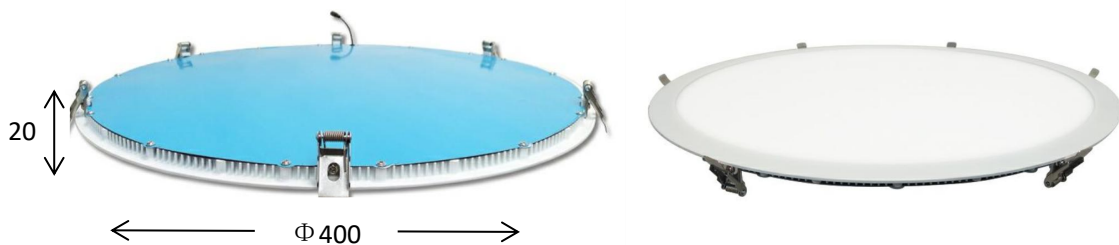
# FOSHAN SHINING LIGHTING TECHNOLOGY CO., LTD

ADD: D factory, #10, Baihe Road, Nanhai Danzao Eco-Industrial Park Zip: 528216 W: <http://www.gledse.com/>  
 T: 86-757-86780855 F: 86-757-86765036 M: 86-18927767560 Email: sales@gledse.com

## PRODUCT SPECIFICATION



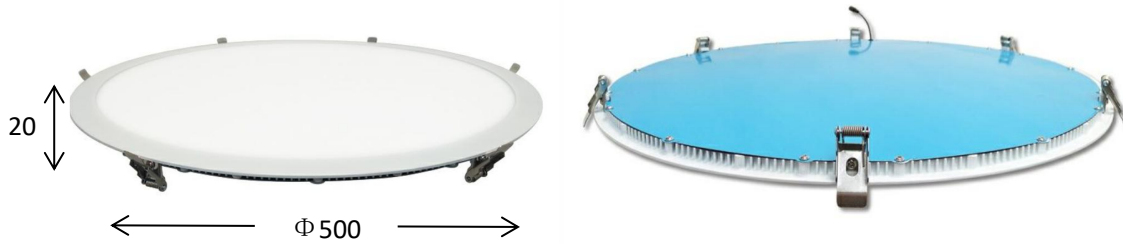
Quick Details			
Model No.	<b>SL-PLSRR30-20W</b>	Input Vol.	AC 220-240V;AC100-277V
Product size	Φ 300*H20 mm	Cutting Size (mm)	Φ 285
Power	20W	PF	>0.9
Lumens	2000LM	CCT	WW3000K /NW4000K /CW6000K
IP Rating	IP20	Warranty (Years)	5 years
Material	6063AL+PMMA	Customized	/
Dimming serve	DALI dimming、0-10V dimming、Bluetooth dimming、SCR dimming		



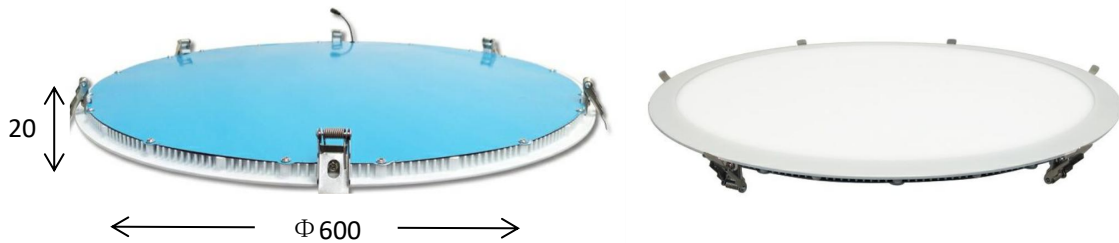
Quick Details			
Model No.	<b>SL-PLSRR40-30W</b>	Input Vol.	AC 220-240V;AC100-277V
Product size	Φ 400*H20 mm	Cutting Size (mm)	Φ 385
Power	30W	PF	>0.9
Lumens	3000LM	CCT	WW3000K /NW4000K /CW6000K
IP Rating	IP20	Warranty (Years)	5 years
Material	6063AL+PMMA	Customized	/
Dimming serve	DALI dimming、0-10V dimming、Bluetooth dimming、SCR dimming		

# FOSHAN SHINING LIGHTING TECHNOLOGY CO., LTD

ADD: D factory, #10, Baihe Road, Nanhai Danzao Eco-Industrial Park Zip: 528216 W: <http://www.gledse.com/>  
 T: 86-757-86780855 F: 86-757-86765036 M: 86-18927767560 Email: [sales@gledse.com](mailto:sales@gledse.com)



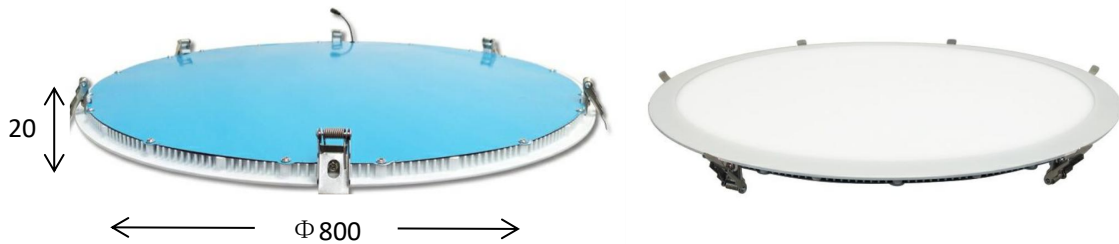
Quick Details			
Model No.	<b>SL-PLSRR50-36W</b>	Input Vol.	AC 220-240V;AC100-277V
Product size	Φ 500*H20 mm	Cutting Size (mm)	Φ 485
Power	36W	PF	>0.9
Lumens	3600LM	CCT	WW3000K /NW4000K /CW6000K
IP Rating	IP20	Warranty (Years)	5 years
Material	6063AL+PMMA	Customized	/
Dimming serve	DALI dimming、0-10V dimming、Bluetooth dimming、SCR dimming		



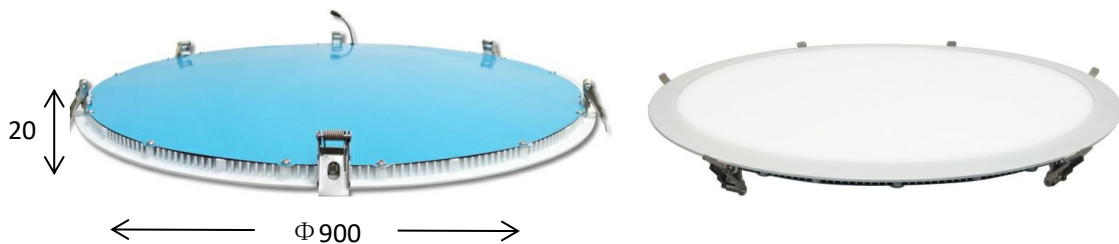
Quick Details			
Model No.	<b>SL-PLSRR60-40W</b>	Input Vol.	AC 220-240V;AC100-277V
Product size	Φ 600*H20 mm	Cutting Size (mm)	Φ 585
Power	40W	PF	>0.9
Lumens	4000LM	CCT	WW3000K /NW4000K /CW6000K
IP Rating	IP20	Warranty (Years)	5 years
Material	6063AL+PMMA	Customized	/
Dimming serve	DALI dimming、0-10V dimming、Bluetooth dimming、SCR dimming		

# FOSHAN SHINING LIGHTING TECHNOLOGY CO., LTD

ADD: D factory, #10, Baihe Road, Nanhai Danzao Eco-Industrial Park Zip: 528216 W: <http://www.gledse.com/>  
 T: 86-757-86780855 F: 86-757-86765036 M: 86-18927767560 Email: [sales@gledse.com](mailto:sales@gledse.com)



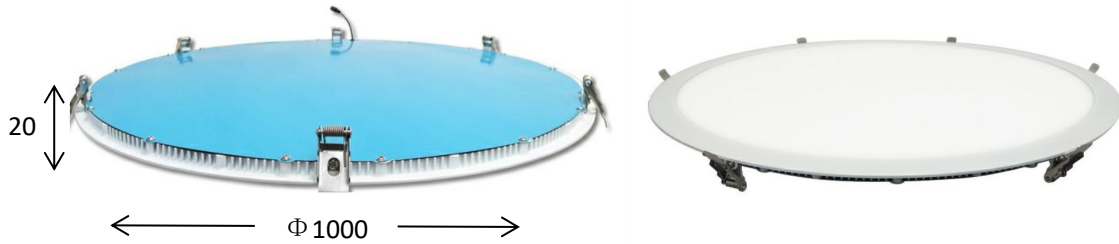
Quick Details			
Model No.	<b>SL-PLSRR80-72W</b>	Input Vol.	AC 220-240V;AC100-277V
Product size	Φ 800*H20 mm	Cutting Size (mm)	Φ 785
Power	72W	PF	>0.9
Lumens	7200LM	CCT	WW3000K /NW4000K /CW6000K
IP Rating	IP20	Warranty (Years)	5 years
Material	6063AL+PMMA	Customized	/
Dimming serve	DALI dimming、0-10V dimming、Bluetooth dimming、SCR dimming		



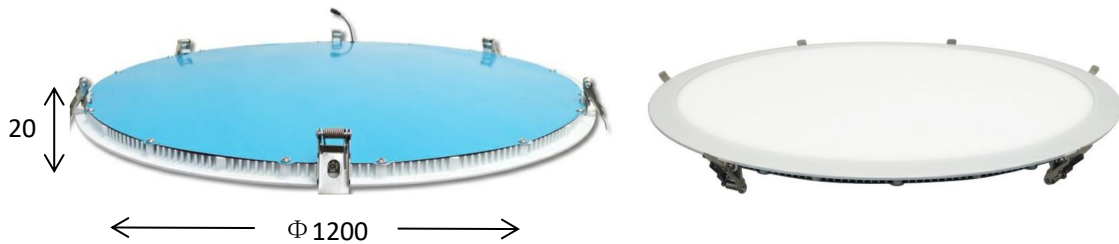
Quick Details			
Model No.	<b>SL-PLSRR90-80W</b>	Input Vol.	AC 220-240V;AC100-277V
Product size	Φ 900*H20 mm	Cutting Size (mm)	Φ 885
Power	80W	PF	>0.9
Lumens	8000LM	CCT	WW3000K /NW4000K /CW6000K
IP Rating	IP20	Warranty (Years)	5 years
Material	6063AL+PMMA	Customized	/
Dimming serve	DALI dimming、0-10V dimming、Bluetooth dimming、SCR dimming		

# FOSHAN SHINING LIGHTING TECHNOLOGY CO., LTD

ADD: D factory, #10, Baihe Road, Nanhai Danzao Eco-Industrial Park Zip: 528216 W: <http://www.gledse.com/>  
 T: 86-757-86780855 F: 86-757-86765036 M: 86-18927767560 Email: [sales@gledse.com](mailto:sales@gledse.com)



Quick Details			
Model No.	<b>SL-PLSRR100-100W</b>	Input Vol.	AC 220-240V;AC100-277V
Product size	Φ 1000*H20 mm	Cutting Size (mm)	Φ 985
Power	100W	PF	>0.9
Lumens	10000LM	CCT	WW3000K /NW4000K /CW6000K
IP Rating	IP20	Warranty (Years)	5 years
Material	6063AL+PMMA	Customized	/
Dimming serve	DALI dimming、0-10V dimming、Bluetooth dimming、SCR dimming		



Quick Details			
Model No.	<b>SL-PLSRR120-120W</b>	Input Vol.	AC 220-240V;AC100-277V
Product size	Φ 1200*H20 mm	Cutting Size (mm)	Φ 1185
Power	120W	PF	>0.9
Lumens	12000LM	CCT	WW3000K /NW4000K /CW6000K
IP Rating	IP20	Warranty (Years)	5 years
Material	6063AL+PMMA	Customized	/
Dimming serve	DALI dimming、0-10V dimming、Bluetooth dimming、SCR dimming		



# FOSHAN SHINING LIGHTING TECHNOLOGY CO., LTD

ADD: D factory, #10, Baihe Road, Nanhai Danzao Eco-Industrial Park Zip: 528216 W: <http://www.gledse.com/>  
T: 86-757-86780855 F: 86-757-86765036 M: 86-18927767560 Email: [sales@gledse.com](mailto:sales@gledse.com)

## 1. Features:

- (1) **Ultra-thin body:** the thickness is only 20mm which is elegant and save space. The size of the light can be from 200mm-1200mm.
- (2) **Aluminum house:** Aluminum frames made from the strong painting aluminum casting housing, high corrosi on resistance, and high heat dissipation.
- (3) **Energy and cost saving:** It is saving 85% power compared with ordinary light.
- (4) **Eco-friendly:** no ultraviolet and infrared radiation, no electromagnetic.
- (5) **High Electricity Utilization:** high photoelectric conversion rate.
- (6) **High Security Performance:** with constant gentle current, fast start, low voltage, low power consumption.
- (7) **Eye Protect:** no strobe flash, high color rendering, no felling tired even after long-term using eye.
- (8) **Professional Customization:** freely choose the specification what you like.
- (9) **Ultra-bright & energy efficient:** 100-120lm/w high output, much brighter than fluorescent, save more mone y on your energy bill.
- (10) **Long lifespan:** 50000hrs, 5 times longer than fluorescent, reduce your replacement frequency and mainten ance cost. 5 years Warranty.

## 2. Construction:





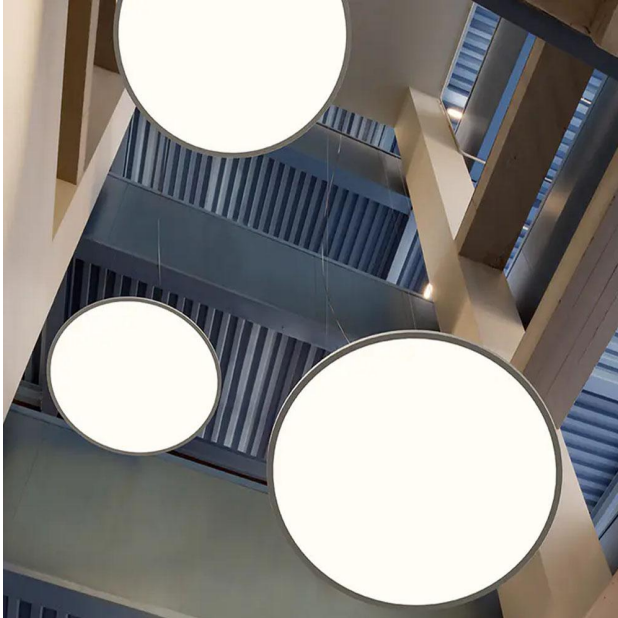
# FOSHAN SHINING LIGHTING TECHNOLOGY CO., LTD

ADD: D factory, #10, Baihe Road, Nanhai Danzao Eco-Industrial Park Zip: 528216 W: <http://www.gledse.com/>  
T: 86-757-86780855 F: 86-757-86765036 M: 86-18927767560 Email: [sales@gledse.com](mailto:sales@gledse.com)

---

## 3. Application:

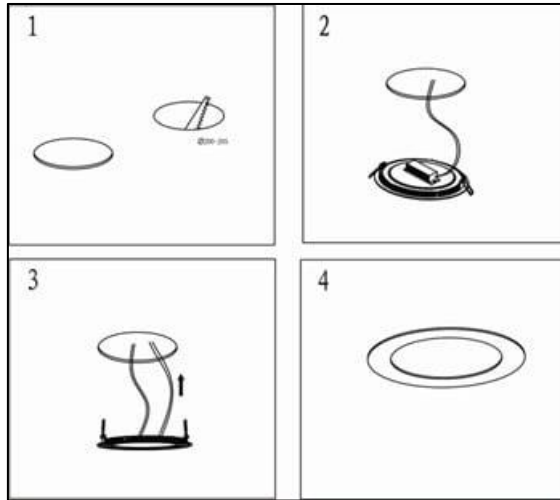
Ultra-thin led panel light is widely applied to which traditional fluorescent lamps would normally be used. It appears in anyplace that needs light, such as factories, banks, hotels, stores, commercial buildings, shopping malls, supermarket and underground garage etc.



# FOSHAN SHINING LIGHTING TECHNOLOGY CO., LTD

ADD: D factory, #10, Baihe Road, Nanhai Danzao Eco-Industrial Park Zip: 528216 W: <http://www.gledse.com/>  
T: 86-757-86780855 F: 86-757-86765036 M: 86-18927767560 Email: [sales@gledse.com](mailto:sales@gledse.com)

## 4. Installation:



## 5. Packaging information:



Remark: The above packing information is only for reference.  
The platform or the plywood frame will be additional charged as per the package.

**For more detail information, please contact our Sales Representative. Thanks for your attention.**